

Module 5: SLM Territorial Planning

Project core team from RS tried hard to gather key national, regional and local stakeholders for mainstreaming SLM into national and territorial planning processes, strategies, programs, projects, incentive and financing mechanisms, microfinance mechanisms. For the four municipalities (Banjaluka, Laktasi, Gradiska and Samac) were developed strategic documents "The Basis for Agricultural Land Protection, Use and Restructuring" as the component of the land use planning process.

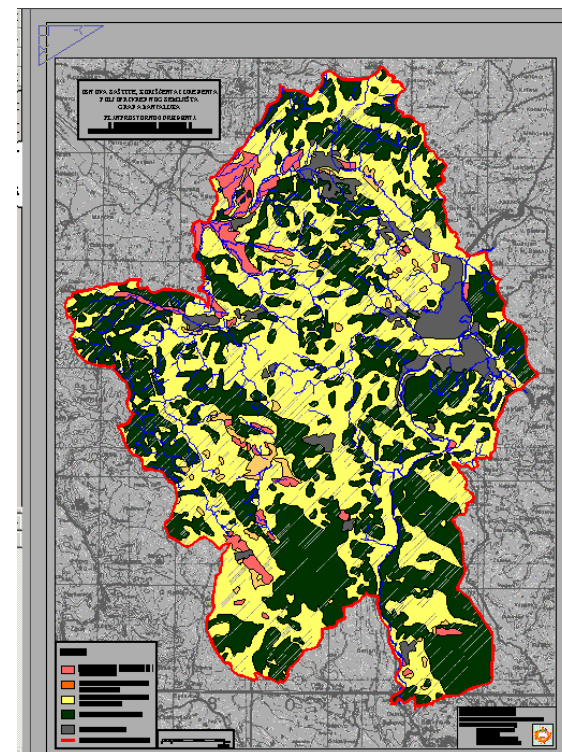
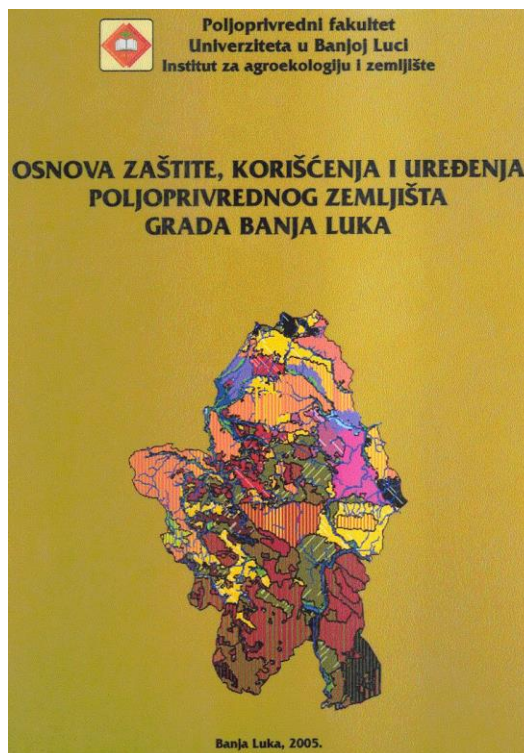


Fig. 1. and 2. The Basis for Agricultural Land Protection, Use and Restructuring of municipality Banja Luka (Marković, M.)