



Module 3. Selection of priority landscapes

Site selection criteria:

1. Areas that are priority for Government of RS and strategic framework
2. Severity of land degradation
3. Areas of intensive agriculture production
4. Number of farmers (women) dependant of the area
5. Possibility to exchange knowledge with other local communities
6. Readiness of local governments to cooperate and support activities
7. Public agricultural/forest land under Entity ownership
8. Active participation of local stakeholders in capacity building
9. Willingness of local stakeholders to participate in trainings, educations, site visits
10. Areas endangered by the most important land degradation drivers like floods, drought and wildfires
11. Ecologically vulnerable areas, specifically karst, flood and drought affected regions

Demonstration sites for testing and disseminating SLM practices selected in RS entity were: municipalities Pelagićevo, Šamac and Trebinje;

Module 3. Selection of priority landscapes



Fig. 1. Drought in Pelagicevo area (SRNA. 2015)



Fig. 2. SLM irrigation measure – Pelagićevo municipality (Marković, M. 2017)



Fig. 3. The catastrophic flood in May 2014 has left terrible consequences on the municipality of Šamac.

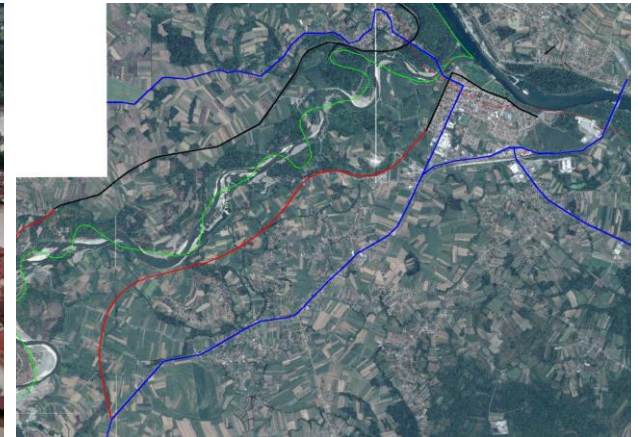


Fig. 4. The conceptual solution of the embankment for the protection of the municipality of Šamac from flooding.

Module 3. Selection of priority landscapes



Fig. 5. Bare land in Trebinje area (Kapović Solomun, M. 2017)



Fig. 6. SLM afforestation on gradones in 1960s



Fig. 7. SLM afforestation measure on karst region – bare land (Kapović Solomun, M. 2017)



Fig. 8. Intensive agriculture on karst fields in Trebinje area (Kapović Solomun, M. 2017)