



## Module 2. National /subnational assessment

Methodological aspects:

Overview of existing relevant land resource databases and documents:

- LDN report BiH and UNCCD AP BIH (NAP BIH);
- SOTER - Global Soil and Terrain Database;
- Various national and regional overviews of agricultural production statistics;

Comprehensive analyse of land cover status of the Republic of Srpska, according to national LC classes was done, where existing national information were compared with CORINE LC and Global datasets under LDN TSP process. Estimation of socio-economic status, pressures and drivers of LD, intensity and severity of land degradation and dominant land use systems were first step in LD assessment, that is compared to existing national priorities in terms on land degraded areas and land protection. Active partnership is established among local communities, entity institutions and public enterprises to identify existing policy instruments, main LUS and LMS under administrative boundaries, needs and gaps at national and local levels needed for SLM mainstreaming. Land cover is assessed and priority pilot areas are identified as following:

- Pelagićevo Municipality,
- Šamac Municipality,
- Trebinje Municipality.

Structure of Land cover and Land cover change was estimated using CORINE LC database and global database under LDN TSP.

## Module 2. National /subnational assessment

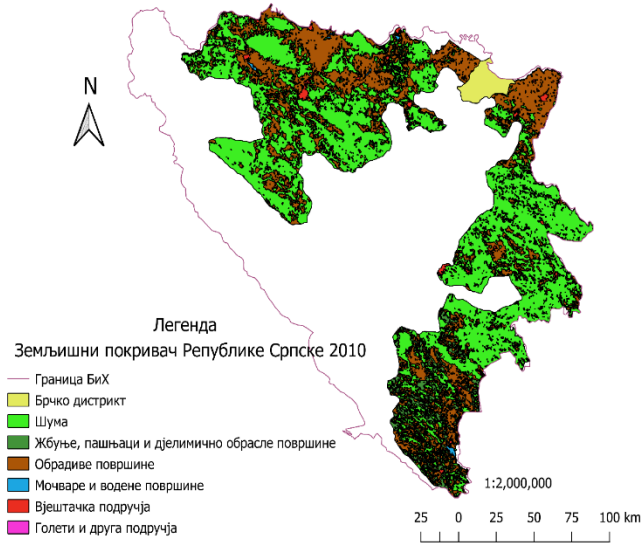


Fig. 1. Land cover RS 2010 (ESA)

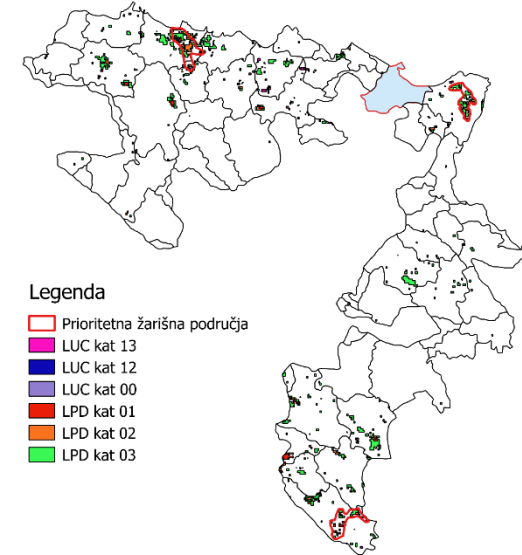


Fig. 2. Land degradation hot spots in RS (ESA)

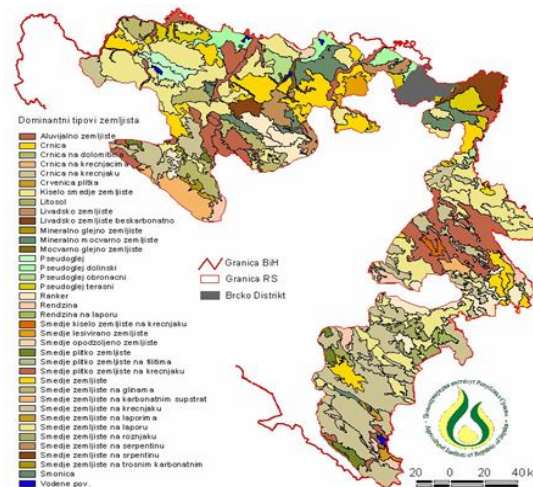


Fig. 3. Spatial representation of dominant soils types in RS by SOTER units (Agricultural Institute of RS)