

A woman in traditional attire, carrying a large woven basket on her back, is walking through a vibrant, terraced rice field. The terraces are filled with lush green rice plants, and the landscape is hilly and mountainous. In the background, a small wooden house with a blue roof is visible on a hillside. The scene is bathed in warm, golden light, suggesting a sunrise or sunset.

# Land Tenure for SLM Module

Lesson from Madagascar and Guidance for Implementation

M. Guglielma da Passano,  
Associate Researcher,  
WOCAT / AfrioCAT

# Land Tenure for SLM Module



**Why a Land Tenure for SLM Module**

**What is the Land Tenure for the SLM Module**

**Lessons learned from Madagascar implementation**

**Guidance for future users**

**Testing the Module, next steps**

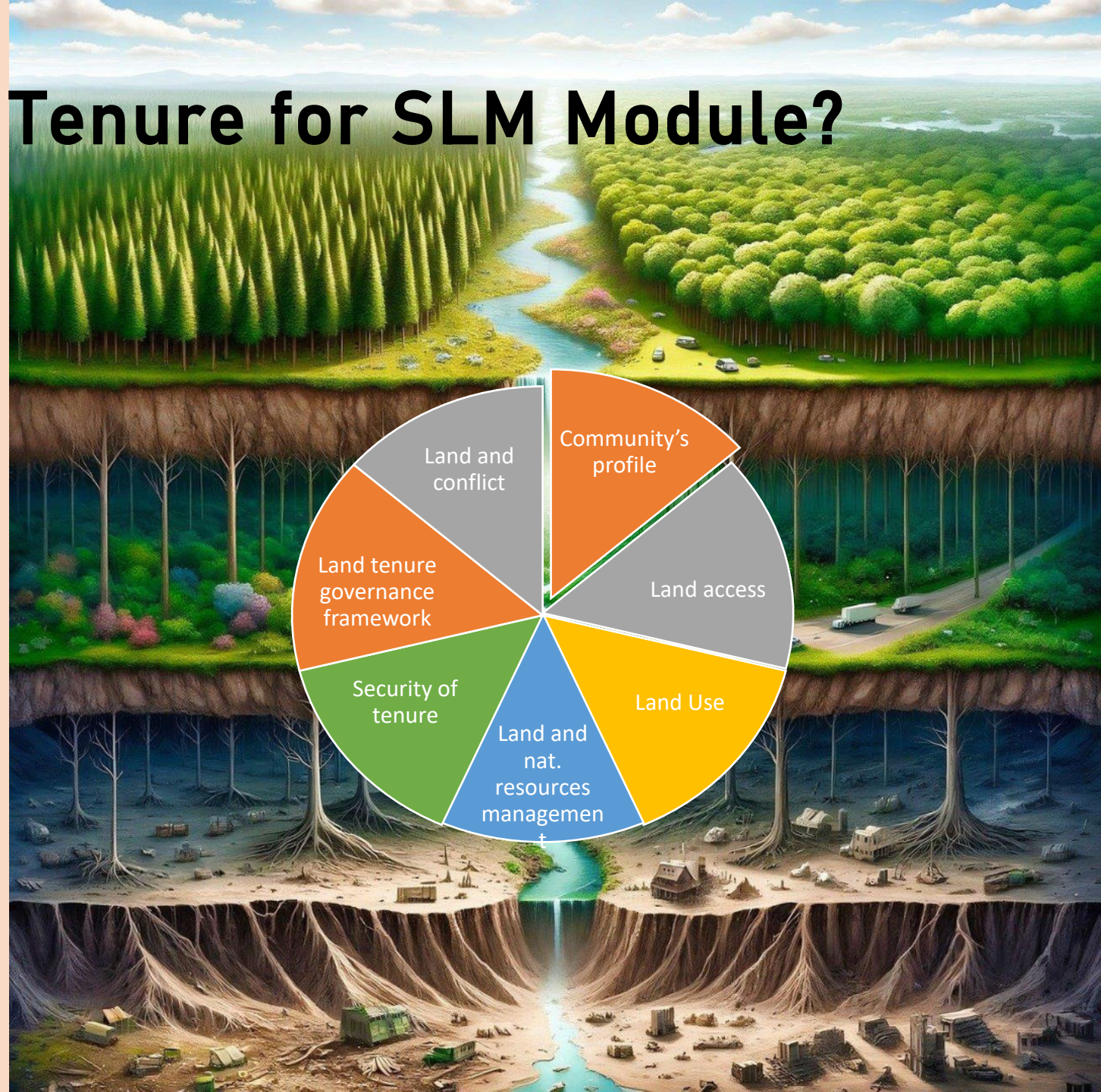


**Why a Land  
tenure for  
SLM Module?**

# What is the Land Tenure for SLM Module?

A WOCAT tool to:

- ✓ ID land tenure priorities to enable the adoption of SLM practices
- ✓ Assess the tenure governance system against the needs of the community/practice
- ✓ Assess how these needs are changing
- ✓ Support communities in prioritizing tenure actions for SLM activities



# The Madagascar Pilot

2 Projects,  
2 SLM  
practices

12 villages

60 FGDs  
5 women-  
only,  
22 men-  
only,  
33 mixed

240  
participants  
64 female,  
176 male

1 month

2 teams

4  
facilitators  
& 1  
supervisor

## Outcome

- ✓ Tenure security is important in the context of Fuel Break and afforestation projects in Boeny
- ✓ Challenges related to policy, coordination, and capacity
- ✓ Recs for addressing tenure

# Guidance for future users

- ✓ WOCAT Documentation
- ✓ Project / Programme Design
- ✓ Policy Making
- ✓ Addressing tenure challenges in the SLM context

Define the demand (tenure needs)  
Rapid tenure assessment  
Quality of data  
Analysis of data  
Restitution & Recommendations

# Testing the Module, next steps

✓ WOCAT Documentation

Project / Programme Design

Policy Making

Addressing tenure challenges in the SLM context



**Thank you**

