

Decision Support for Mainstreaming and Scaling out SLM to achieve LDN

UNCCD COP14, Delhi India

3 September 2019, 18:00 – 20:00



MINISTÈRE DE L'AGRICULTURE,
DES RESSOURCES HYDRAULIQUES
ET DE LA PÊCHE



Food and Agriculture
Organization of the
United Nations



World Overview of Conservation Approaches and Technologies



UNIVERSITÄT
BERN
CENTRE FOR DEVELOPMENT
AND ENVIRONMENT

AGENDA

Opening Remarks

Attia Rafla, Tunisia
Dr. Stefan Schlingloff, FAO

Introduction to the Decision Support Framework for Scaling up SLM

Nicole Harari
Research Scientist, WOCAT, CDE, Bern/Switzerland

Contribution of the Sustainable Land Management (SLM) to attend the Land Degradation Neutrality (LDN) "Tunisia case study

Attia Rafla
National Project Coordinator, DS-SLM, Tunisia

LDN and SLM at local level – how it works?

A case study of Bosnia and Herzegovina
Prof. Dr. Hamid Čustović
University of Sarajevo, Faculty of Agriculture and Food Sciences

Mainstreaming, scaling out and best practices of sustainable land management to achieve land degradation neutrality in Panama

Karima Lince,
National Project Coordinator, DS-SLM, Panama

The experience from DS SLM Thailand

Land Degradation Assessment and identification for SLM practices in Thailand
Dr. Bunjirtluk Jindtaridth,
National Project Coordinator, DS-SLM, Thailand

Panel Discussion (with Focal Points)

Questions and Answers

Announcement of forthcoming FAO/WOCAT publication

Decision Support for SLM -
Guidelines and Global Synthesis of Lessons Learned

Closing Remarks

Attia Rafla, Tunisia
Dr. Stefan Schlingloff, FAO



Decision Support Framework for Mainstreaming and Scaling-out SLM

How to make use of evidence to support mainstreaming and scaling-out of SLM practices and remove local, national and regional barriers?

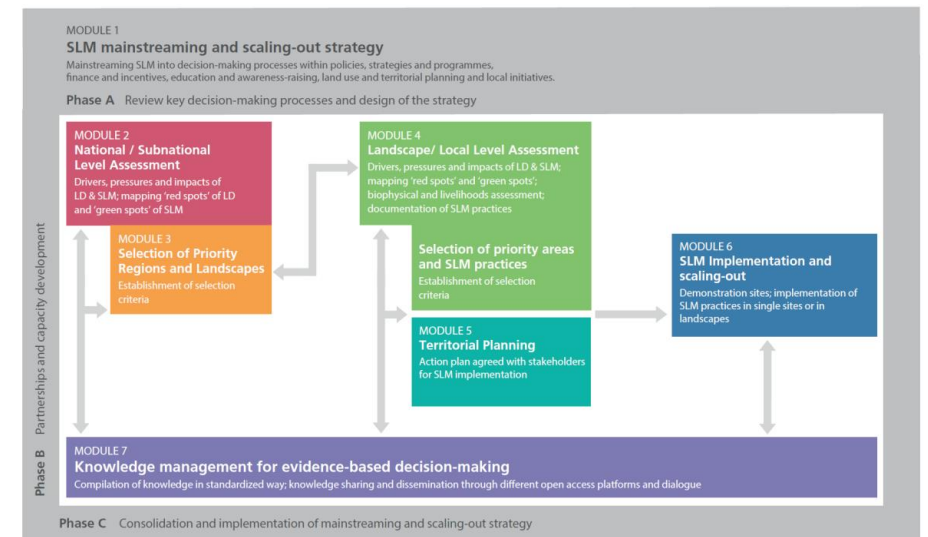
Decision Support Framework developed which:

- guides countries in the process of **evidence-based decision-making for SLM** from the national to the landscape/local level
- follows **seven modules with proposed tools and methods**
- **supports** on-the-ground implementation and **scaling-out of SLM** practices

Innovativeness: embeds evidence in an overall strategy for mainstreaming and scaling-out SLM



Decision Support Framework for SLM mainstreaming and scaling-out

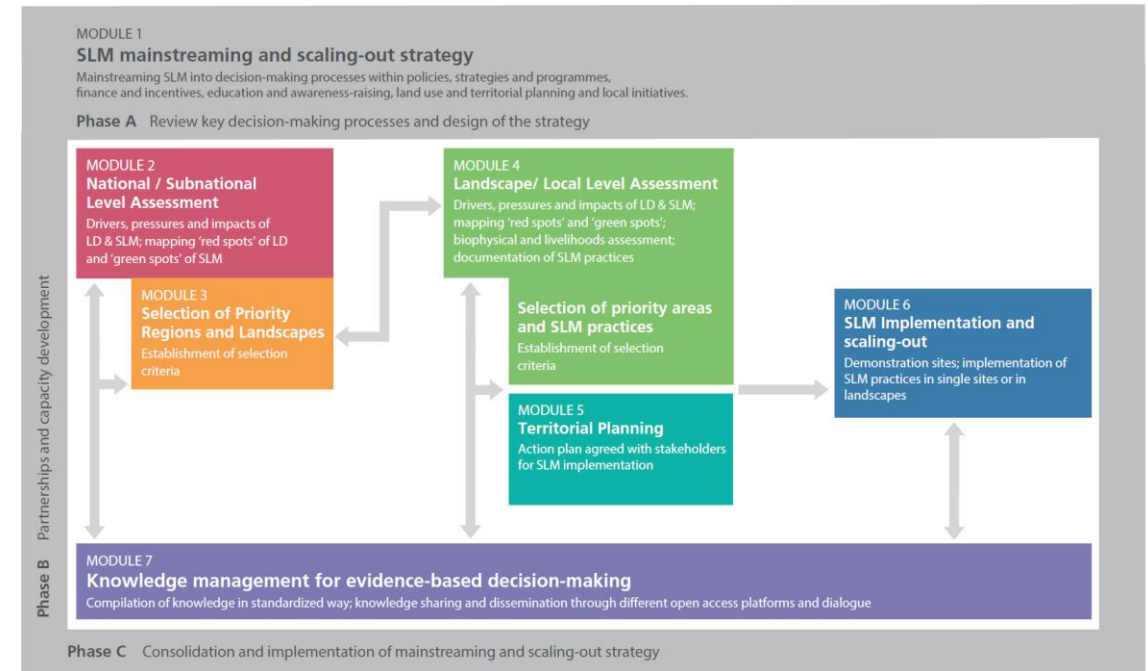


Decision Support Framework for Mainstreaming and Scaling out SLM

The DSF contains the following **features**:

- is **flexible**, and can be tailored to countries' needs and contexts;
- offers, through its **modular format**, different entry points depending on countries' previous activities, existing data, available resources and gaps;
- is applicable at, and links, **different scales**;
- supports **multi-sectoral** and **multi-disciplinary processes**, breaking silos between sectors;
- encourages and facilitates **networking, dialogue, and partnerships**;
- considers **use and management of knowledge** as an intrinsic part of the process.

Decision Support Framework for SLM mainstreaming and scaling-out



Decision Support Framework for Mainstreaming and Scaling out SLM

MODULE 1

SLM mainstreaming and scaling-out strategy

Mainstreaming SLM into decision-making processes within policies, strategies and programmes, finance and incentives, education and awareness-raising, land use and territorial planning and local initiatives.

Phase A Review key decision-making processes and design of the strategy

- strategy to depart from **barriers** at local level, be **simple** and focus on **few objectives and activities**
- prioritize decision-making processes which facilitate SLM implementation and scaling out **beyond a project**
- **linked to LDN processes**



Phase B Partnerships and capacity development

Phase C Consolidation and implementation of mainstreaming and scaling-out strategy

Decision Support Framework for Mainstreaming and Scaling out SLM

MODULE 1

SLM mainstreaming and scaling-out strategy

Mainstreaming SLM into decision-making processes within policies, strategies and programmes, finance and incentives, education and awareness-raising, land use and territorial planning and local initiatives.

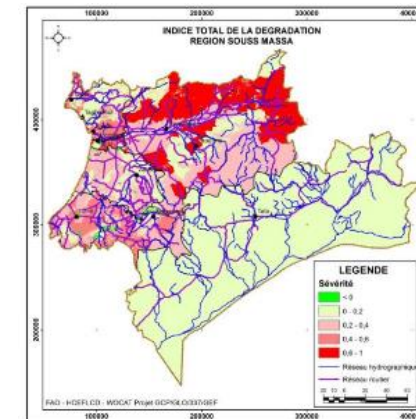
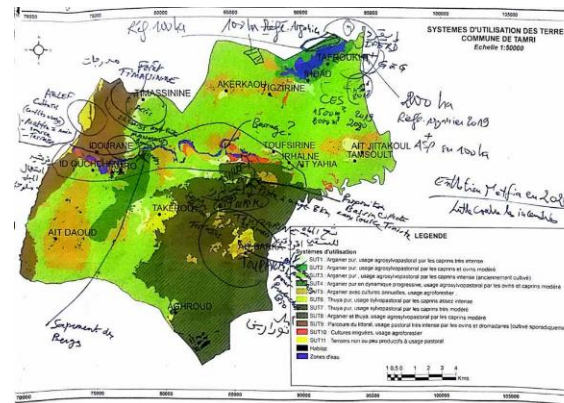
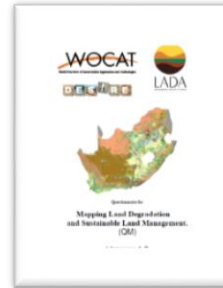
Phase A Review key decision-making processes and design of the strategy

MODULE 2 National / Subnational Level Assessment

Drivers, pressures and impacts of LD & SLM; mapping 'red spots' of LD and 'green spots' of SLM

MODULE 3 Selection of Priority Regions and Landscapes

Establishment of selection criteria



- LD and SLM maps used for LDN reporting and planning of interventions

MODULE 7

Knowledge management for evidence-based decision-making

Compilation of knowledge in standardized way; knowledge sharing and dissemination through different open access platforms and dialogue

Phase B Partnerships and capacity development

Phase C Consolidation and implementation of mainstreaming and scaling-out strategy

Decision Support Framework for Mainstreaming and Scaling out SLM

MODULE 1

SLM mainstreaming and scaling-out strategy

Mainstreaming SLM into decision-making processes within policies, strategies and programmes, finance and incentives, education and awareness-raising, land use and territorial planning and local initiatives.

Phase A Review key decision-making processes and design of the strategy

MODULE 2 National / Subnational Level Assessment

Drivers, pressures and impacts of LD & SLM; mapping 'red spots' of LD and 'green spots' of SLM

MODULE 4 Landscape/ Local Level Assessment

Drivers, pressures and impacts of LD & SLM; mapping 'red spots' and 'green spots'; biophysical and livelihoods assessment; documentation of SLM practices

MODULE 3 Selection of Priority Regions and Landscapes

Establishment of selection criteria

Selection of priority areas and SLM practices

Establishment of selection criteria

MODULE 5 Territorial Planning

Action plan agreed with stakeholders for SLM implementation

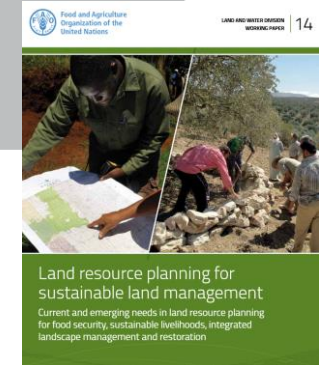
MODULE 7

Knowledge management for evidence-based decision-making

Compilation of knowledge in standardized way; knowledge sharing and dissemination through different open access platforms and dialogue

Phase B Partnerships and capacity development

Phase C Consolidation and implementation of mainstreaming and scaling-out strategy



- **Selection of priority areas and suitable SLM practices for LDN interventions**

Decision Support Framework for Mainstreaming and Scaling out SLM

